



ORGANIZATIONAL CHARTS

DR. MARY L. FIFIELD, PRESIDENT

BUNKER HILL COMMUNITY COLLEGE
250 NEW RUTHERFORD AVENUE
BOSTON, MA 02129-2925

MARCH 1, 2012

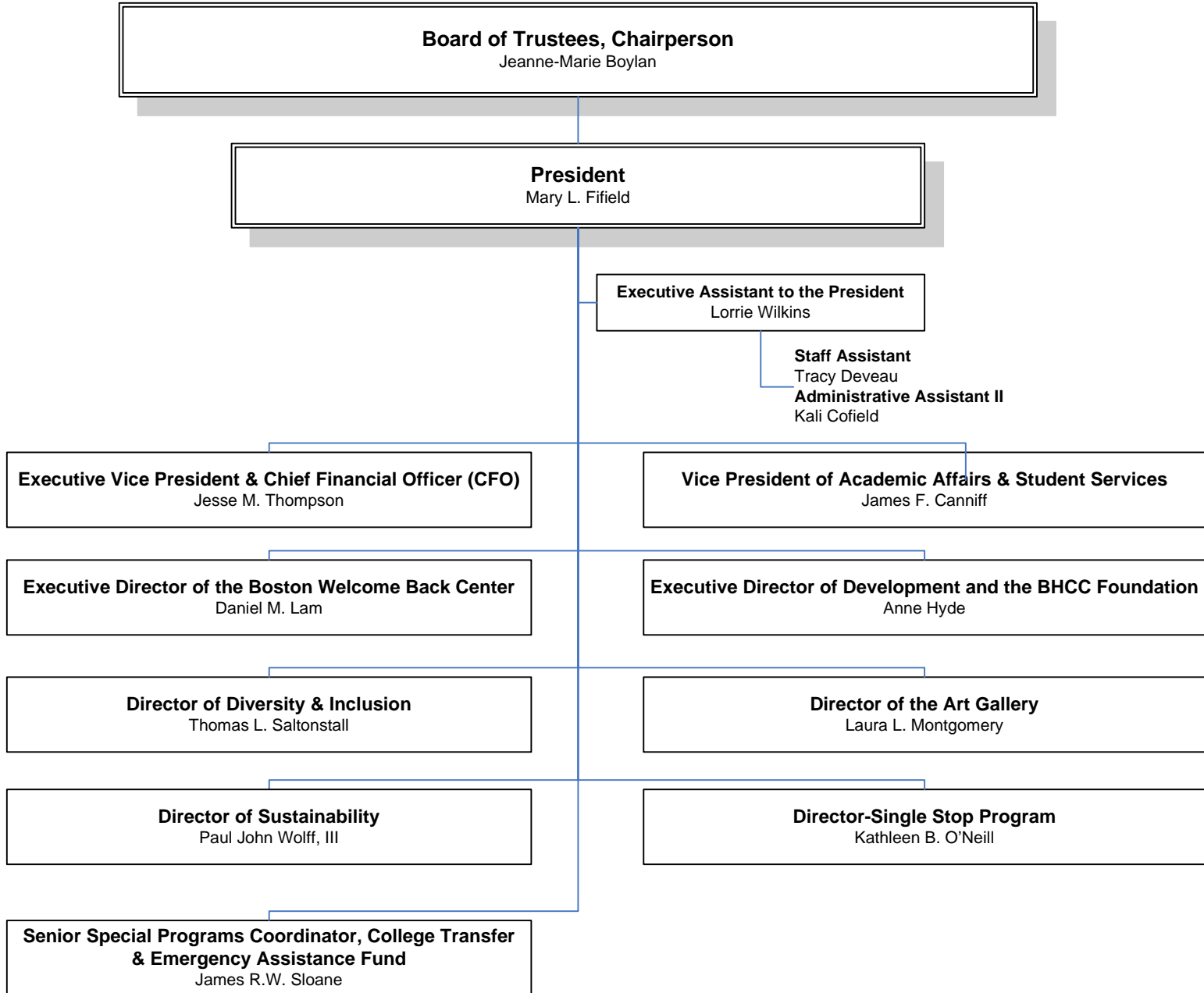
TABLE OF CONTENTS

EXECUTIVE DIVISION	CHART 1	STUDENT PAYMENT OFFICE	CHART 3E
DIVISION OF ACADEMIC AFFAIRS & STUDENT SERVICES	CHART 2	WORKFORCE DEVELOPMENT CENTER	CHART 3F
MATHEMATICS, BEHAVIORAL & SOCIAL SCIENCES	CHART 2A	FISCAL AFFAIRS & CENTRAL SERVICES	CHART 3G
PROFESSIONAL STUDIES	CHART 2B	INFORMATION SERVICES	CHART 3H
NURSE EDUCATION, MEDICAL IMAGING & RESPIRATORY THERAPY	CHART 2C	COMMUNICATIONS & MARKETING	CHART 3I
SCIENCE, ENGINEERING & HEALTH PROGRAMS	CHART 2D	INSTITUTIONAL EFFECTIVENESS	CHART 3J
HUMANITIES & LEARNING COMMUNITIES	CHART 2E	DIVERSITY & INCLUSION	CHART 4
ACADEMIC SUPPORT & COLLEGE PATHWAY PROGRAMS	CHART 2F		
		INSTITUTIONAL ADVANCEMENT & THE BHCC FOUNDATION	CHART 5
CHELSEA CAMPUS & SATELLITE OPERATIONS	CHART 2G		
ACADEMIC AFFAIRS	CHART 2H		
ACADEMIC AFFAIRS & ENROLLMENT SERVICES	CHART 2I	BOSTON WELCOME BACK CENTER	CHART 6
ENROLLMENT SERVICES	CHART 2J		
ADVISING/COUNSELING & ASSESSMENT	CHART 2K		
ADMISSIONS OFFICE	CHART 2L		
LIBRARY & LEARNING COMMONS	CHART 2M		
ON-LINE INSTRUCTION & WEEKEND COLLEGE	CHART 2N		
STUDENT SERVICES	CHART 2O		
DIVISION OF ADMINISTRATION	CHART 3		
BUSINESS OFFICE	CHART 3A		
HUMAN RESOURCES	CHART 3B		
FACILITIES MANAGEMENT	CHART 3C		
PUBLIC SAFETY	CHART 3D		

BUNKER HILL COMMUNITY COLLEGE

EXECUTIVE DIVISION

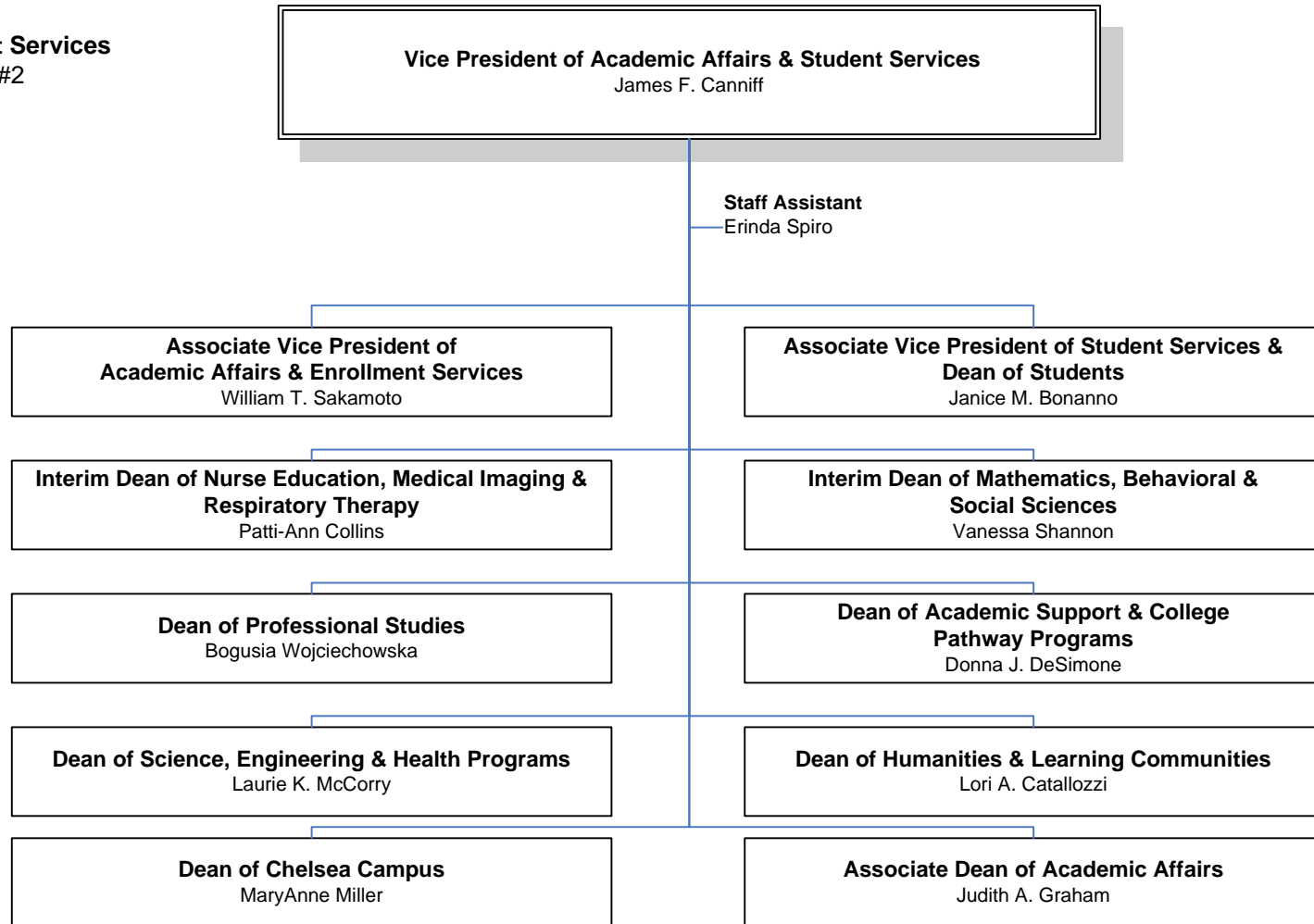
Executive
Organizational Chart #1



BUNKER HILL COMMUNITY COLLEGE

DIVISION OF ACADEMIC AFFAIRS & STUDENT SERVICES

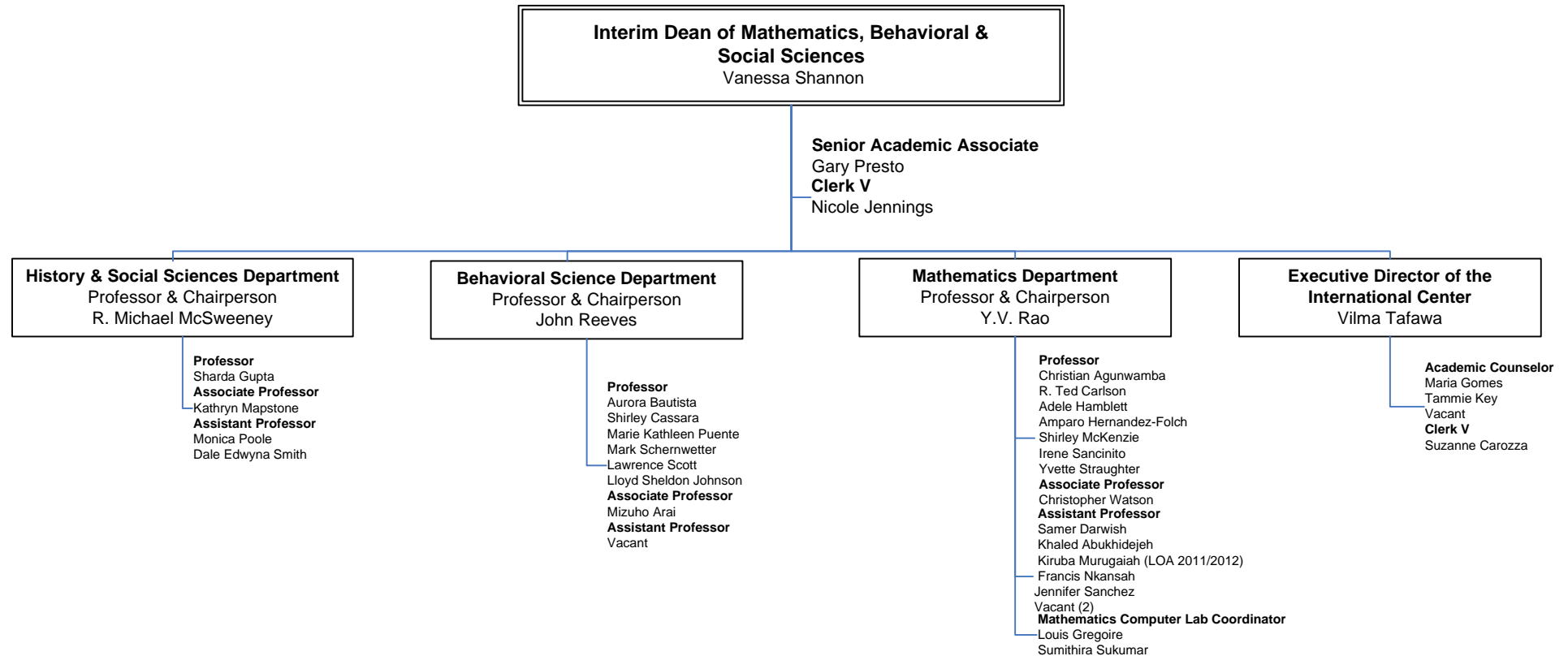
Academic Affairs & Student Services
Organizational Chart #2



BUNKER HILL COMMUNITY COLLEGE

DIVISION OF ACADEMIC AFFAIRS & STUDENT SERVICES

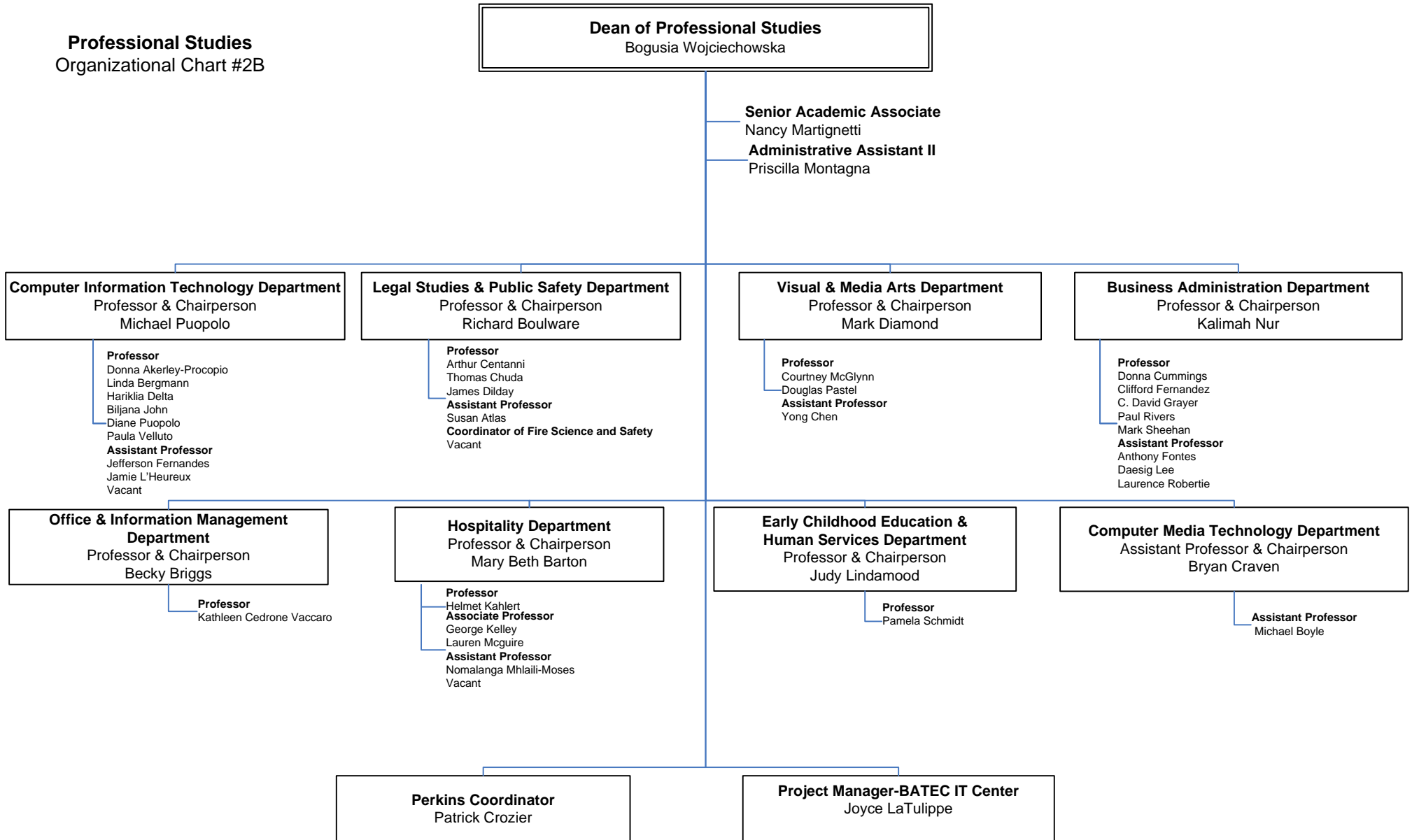
Mathematics, Behavioral & Social Sciences Organizational Chart #2A



BUNKER HILL COMMUNITY COLLEGE

DIVISION OF ACADEMIC AFFAIRS & STUDENT SERVICES

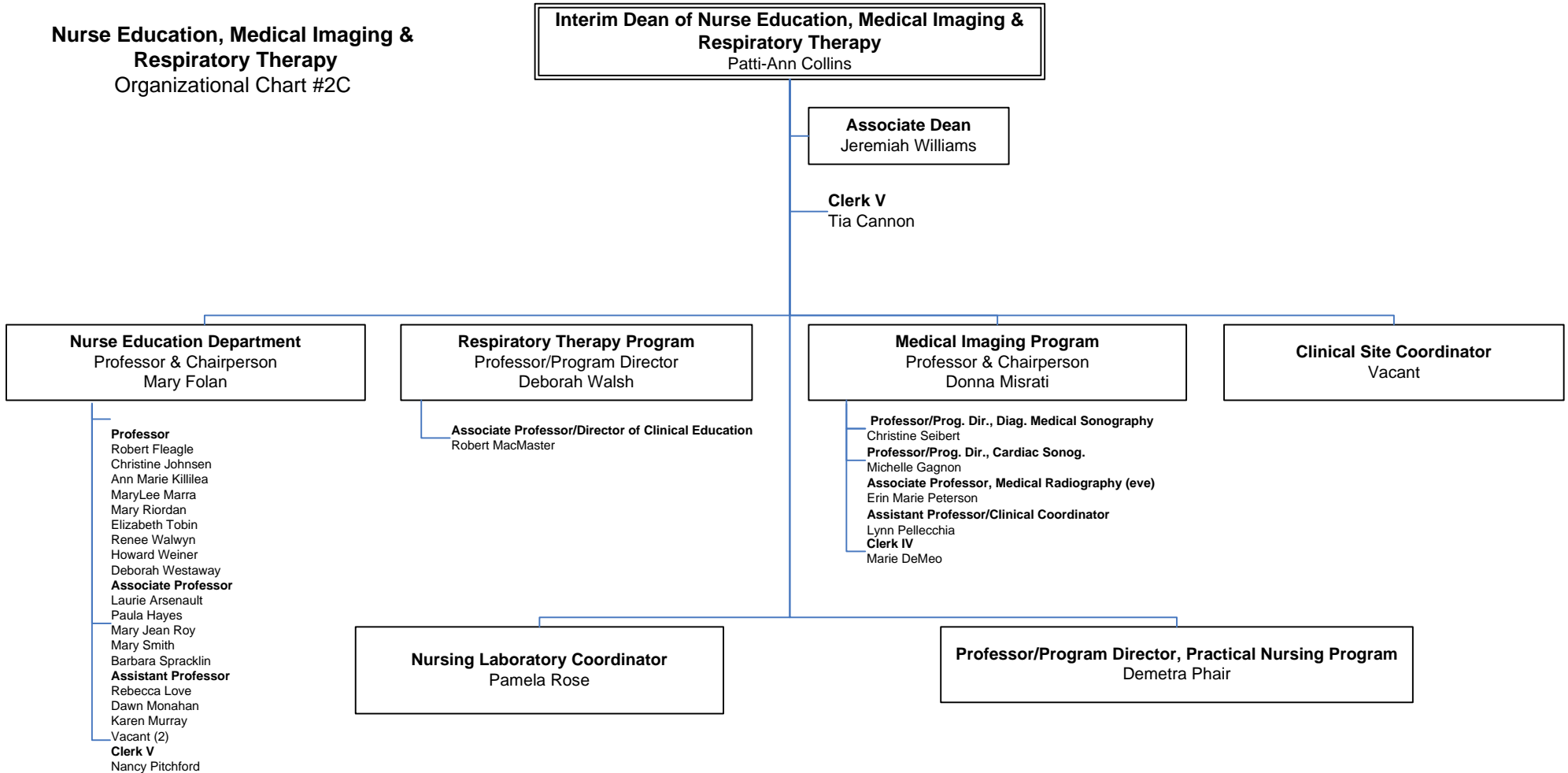
Professional Studies
Organizational Chart #2B



BUNKER HILL COMMUNITY COLLEGE

DIVISION OF ACADEMIC AFFAIRS & STUDENT SERVICES

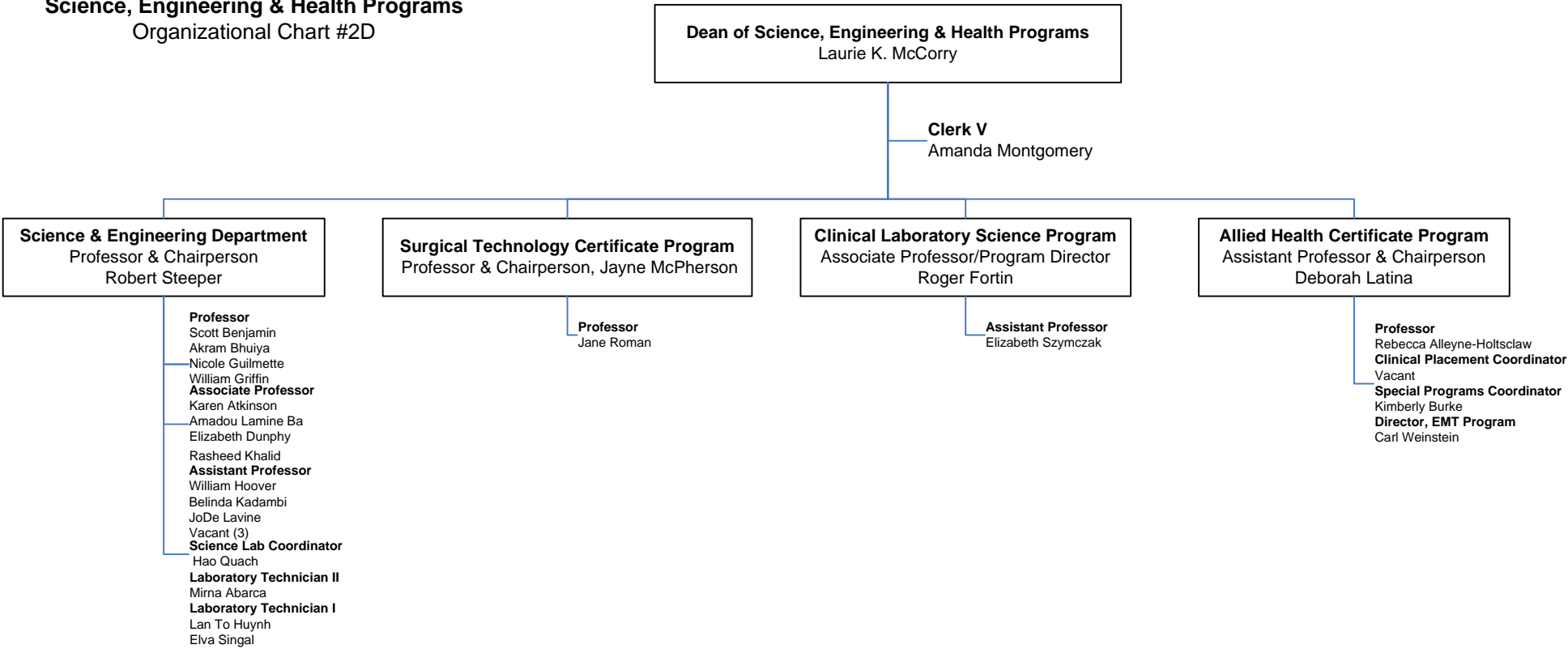
Nurse Education, Medical Imaging & Respiratory Therapy Organizational Chart #2C



BUNKER HILL COMMUNITY COLLEGE

DIVISION OF ACADEMIC AFFAIRS & STUDENT SERVICES

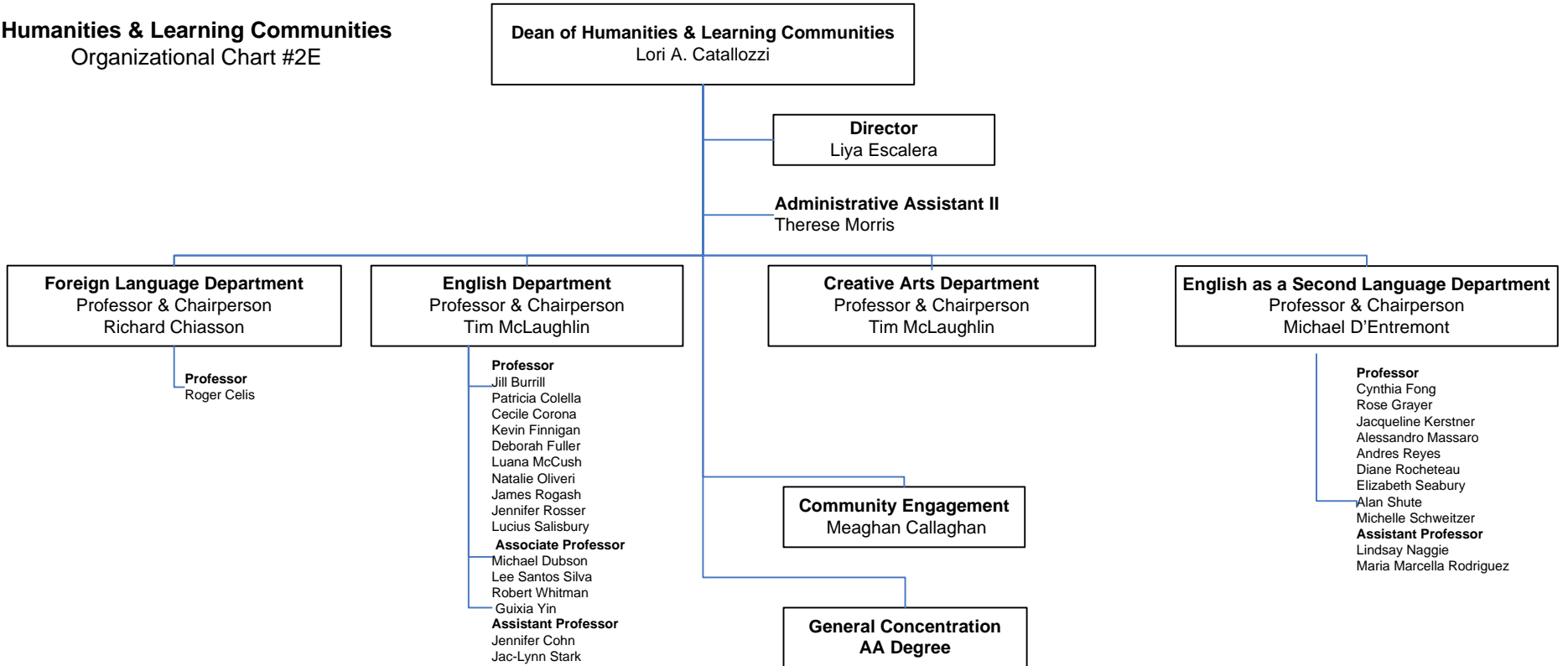
Science, Engineering & Health Programs Organizational Chart #2D



BUNKER HILL COMMUNITY COLLEGE

DIVISION OF ACADEMIC AFFAIRS & STUDENT SERVICES

Humanities & Learning Communities Organizational Chart #2E

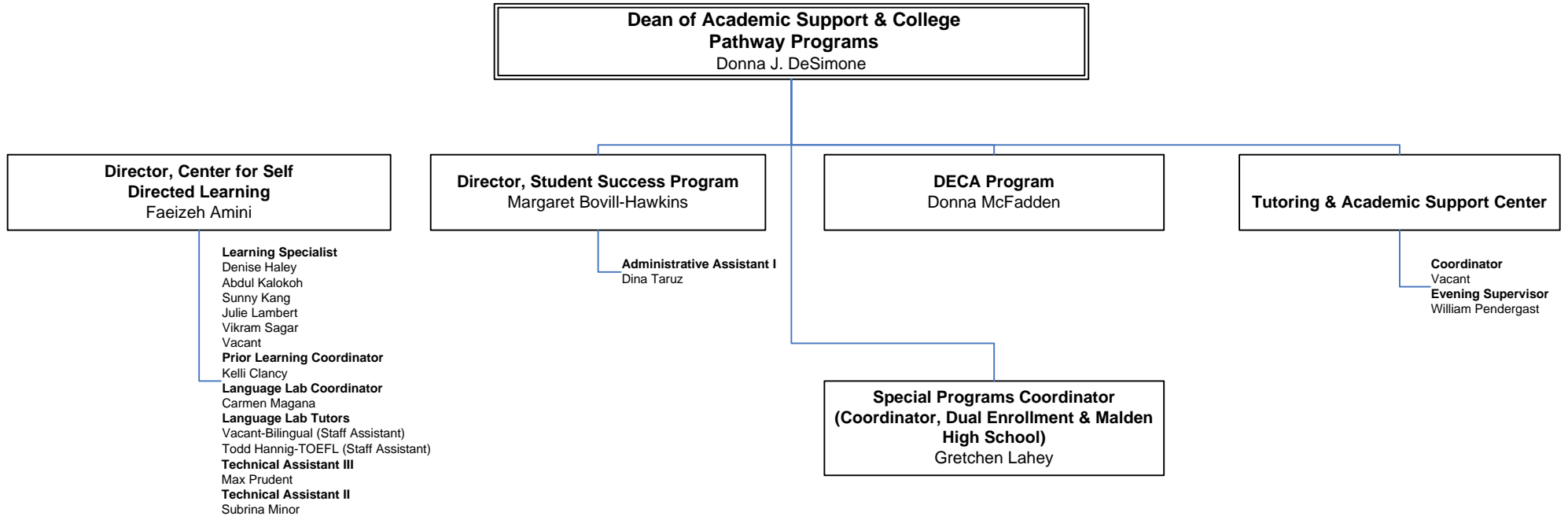


BUNKER HILL COMMUNITY COLLEGE

DIVISION OF ACADEMIC AFFAIRS & STUDENT SERVICES

Academic Support & College Pathway Programs

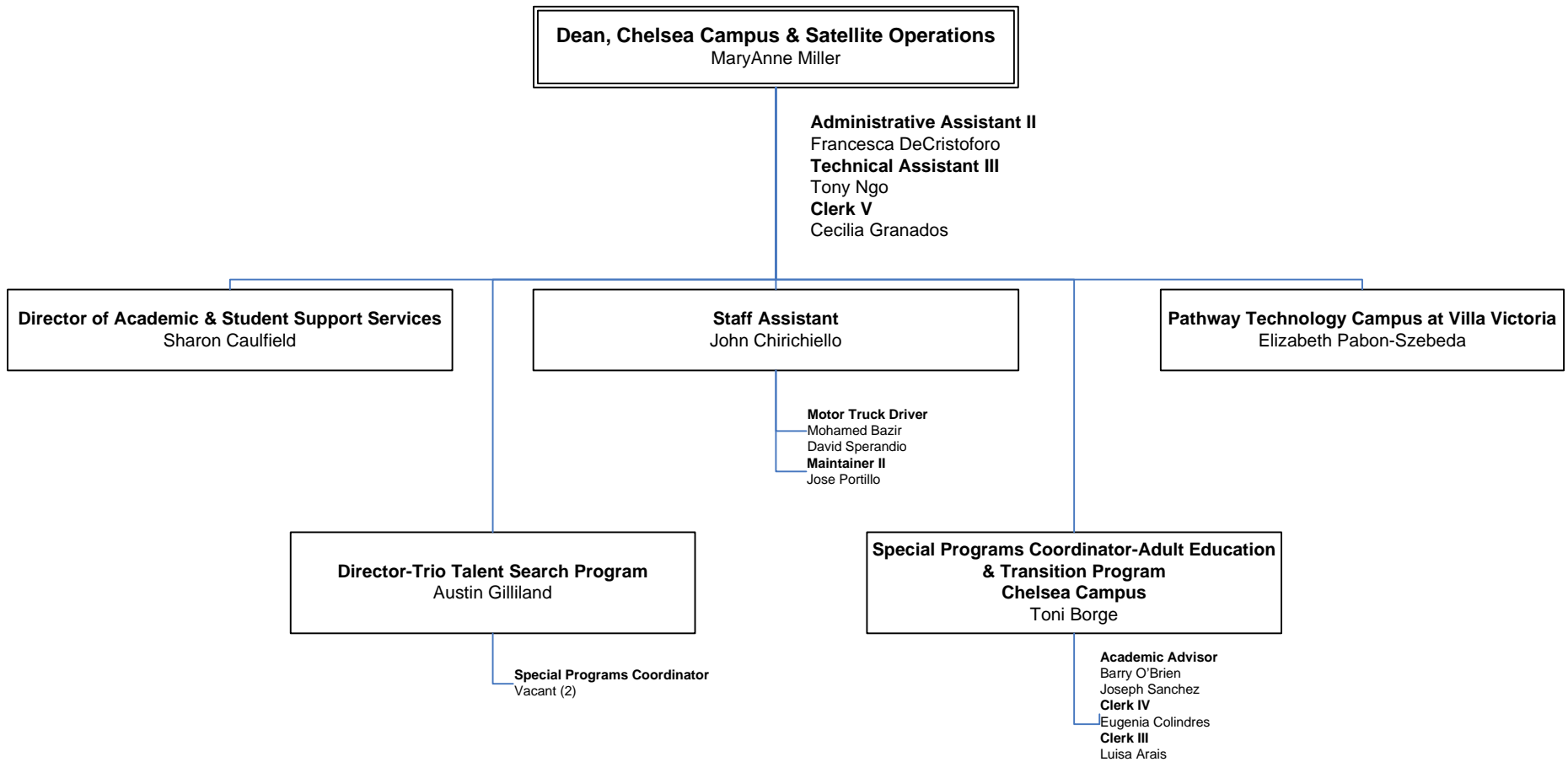
Organizational Chart # 2F



BUNKER HILL COMMUNITY COLLEGE

DIVISION OF ACADEMIC AFFAIRS & STUDENT SERVICES

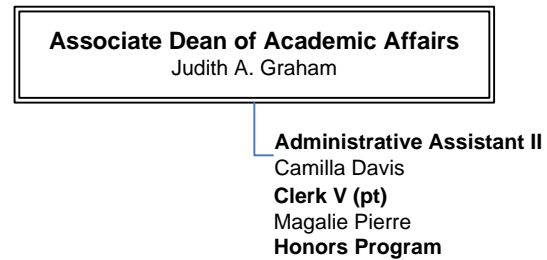
Chelsea Campus & Satellite Operations Organizational Chart #2G



BUNKER HILL COMMUNITY COLLEGE

DIVISION OF ACADEMIC AFFAIRS & STUDENT SERVICES

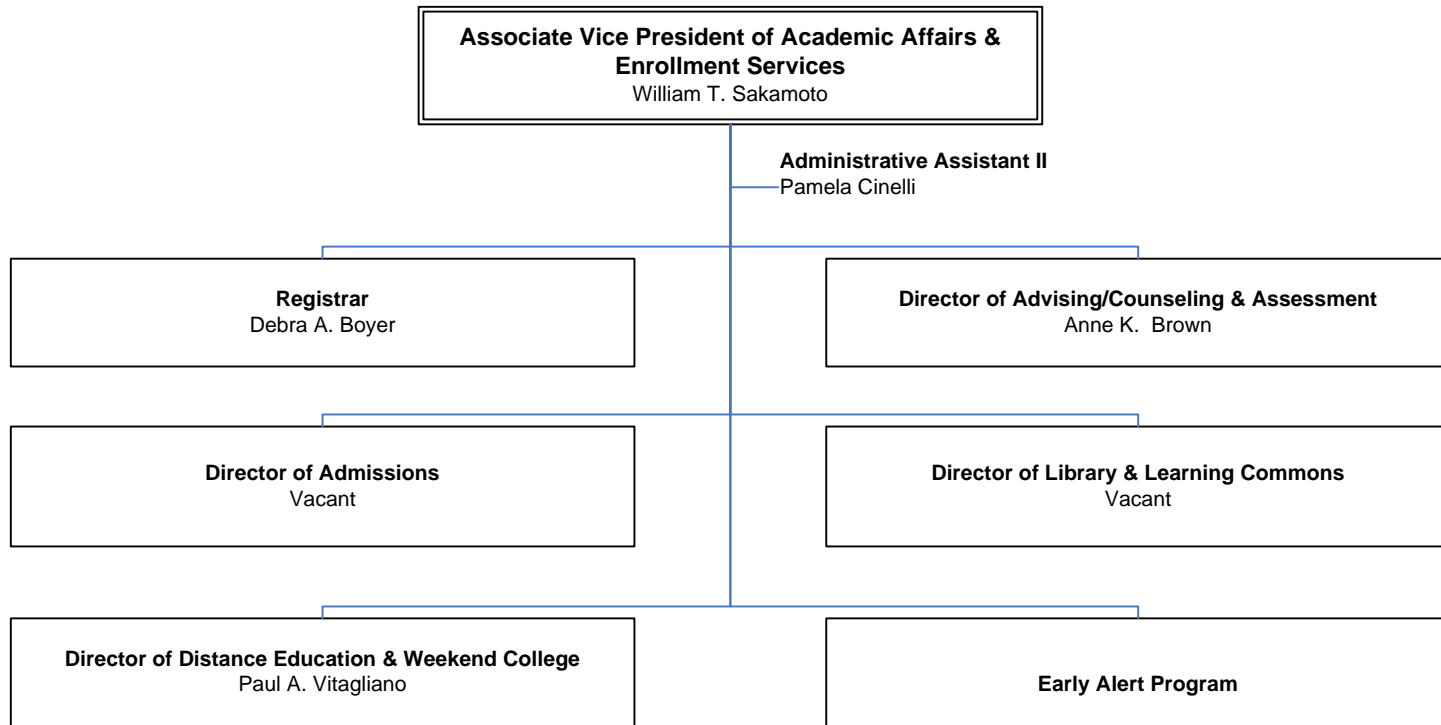
Academic Affairs
Organizational Chart #2H



BUNKER HILL COMMUNITY COLLEGE

DIVISION OF ACADEMIC AFFAIRS & STUDENT SERVICES

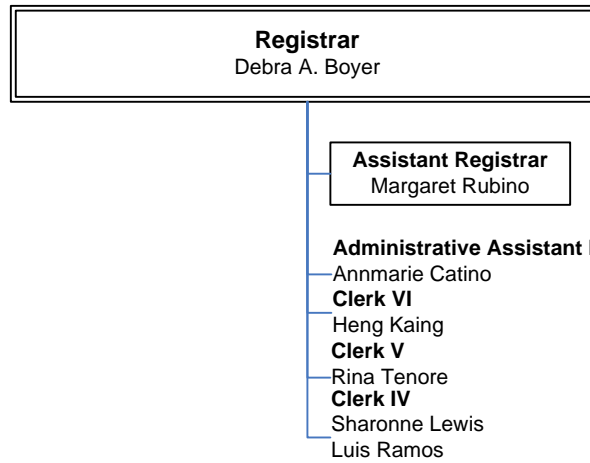
Academic Affairs & Enrollment Services Organizational Chart #21



BUNKER HILL COMMUNITY COLLEGE

DIVISION OF ACADEMIC AFFAIRS & STUDENT SERVICES

Enrollment Services
Organizational Chart #2J

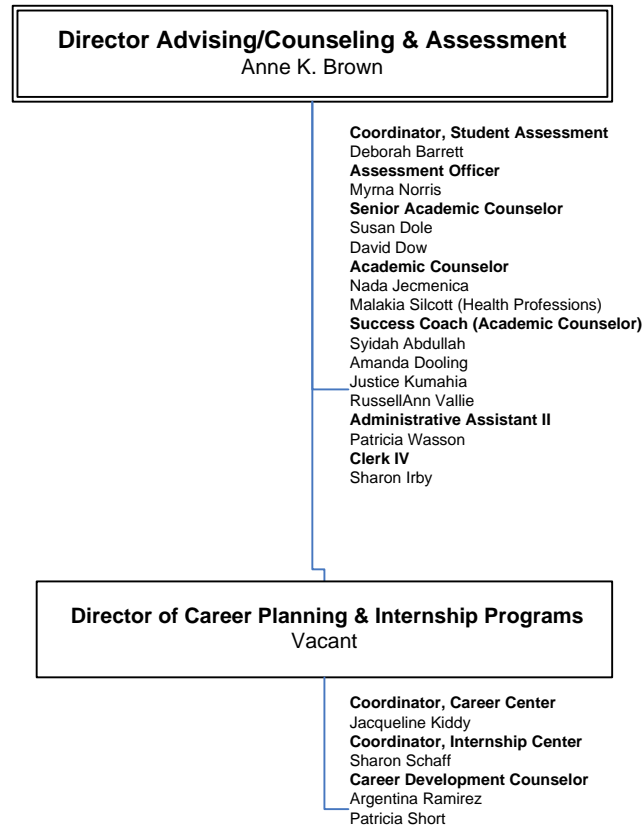


BUNKER HILL COMMUNITY COLLEGE

DIVISION OF ACADEMIC AFFAIRS & STUDENT SERVICES

Advising/Counseling & Assessment

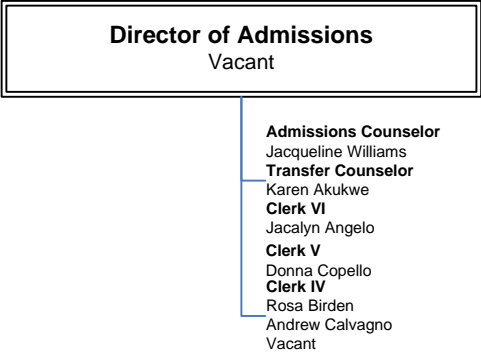
Organizational Chart #2K



BUNKER HILL COMMUNITY COLLEGE

DIVISION OF ACADEMIC AFFAIRS & STUDENT SERVICES

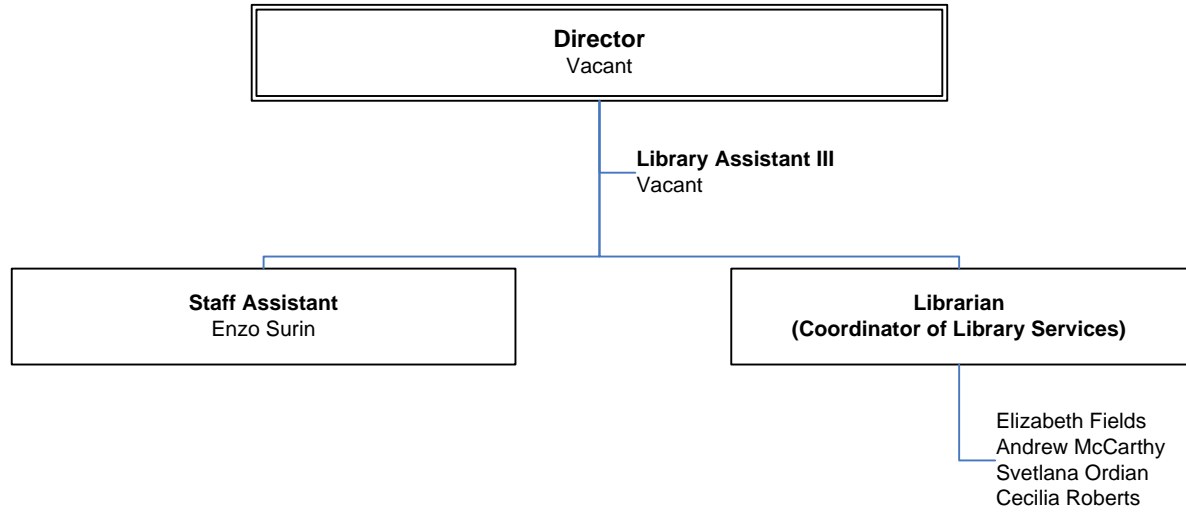
Admissions Organizational Chart #2L



BUNKER HILL COMMUNITY COLLEGE

DIVISION OF ACADEMIC AFFAIRS & STUDENT SERVICES

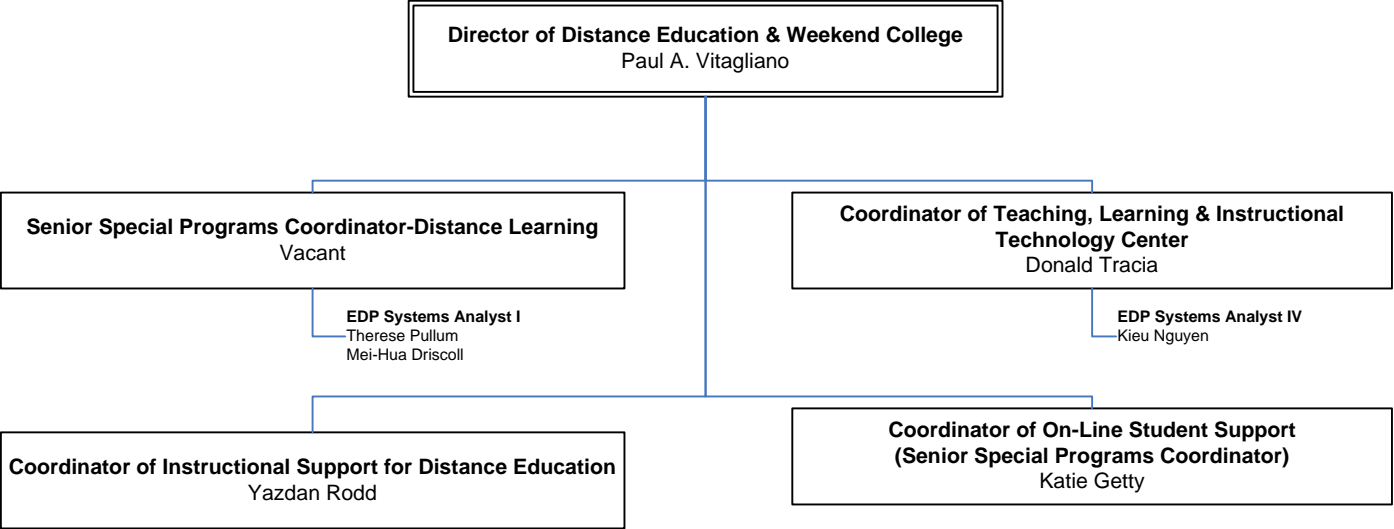
Library & Learning Commons Organizational Chart#2M



BUNKER HILL COMMUNITY COLLEGE

DIVISION OF ACADEMIC AFFAIRS & STUDENT SERVICES

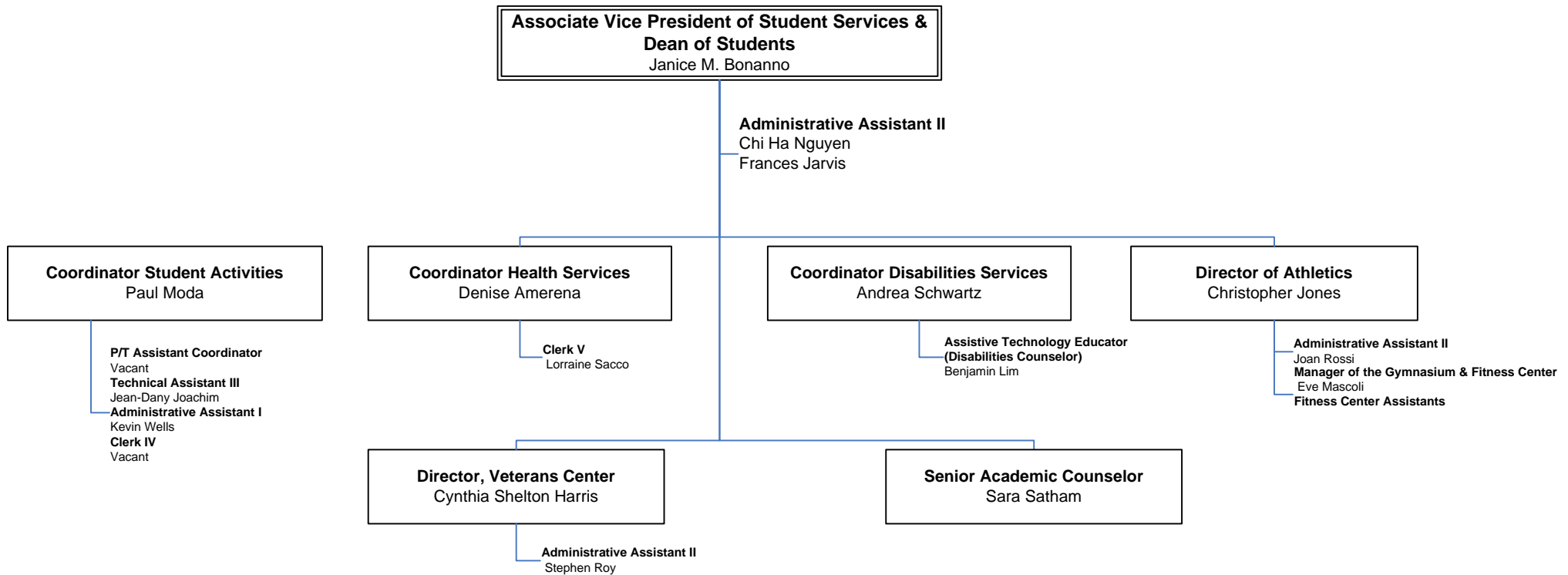
On-Line Instruction & Weekend College Organizational Chart #2N



BUNKER HILL COMMUNITY COLLEGE

DIVISION OF ACADEMIC AFFAIRS & STUDENT SERVICES

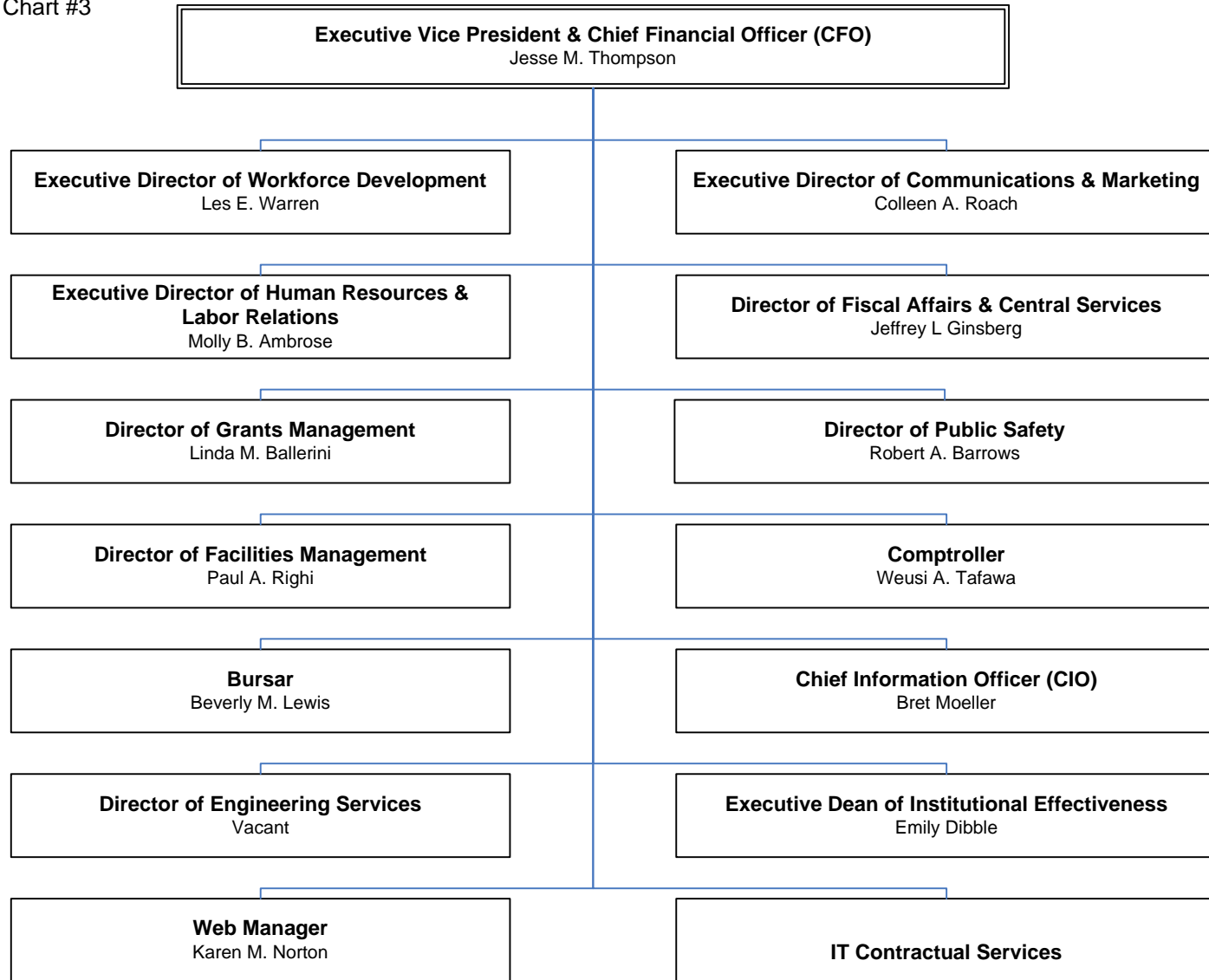
Student Services Organizational Chart #20



BUNKER HILL COMMUNITY COLLEGE

DIVISION OF ADMINISTRATION

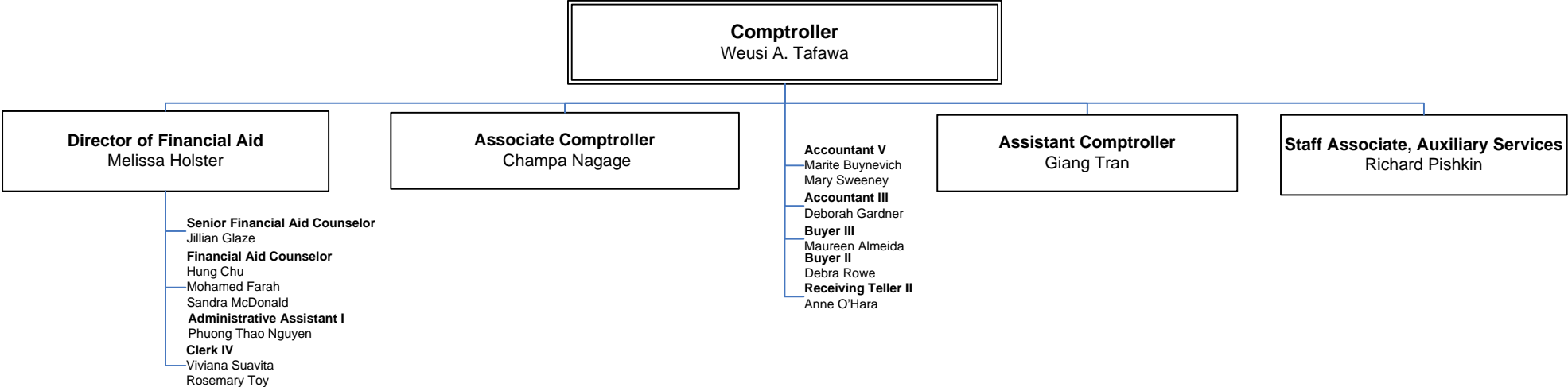
Administration
Organizational Chart #3



BUNKER HILL COMMUNITY COLLEGE

DIVISION OF ADMINISTRATION

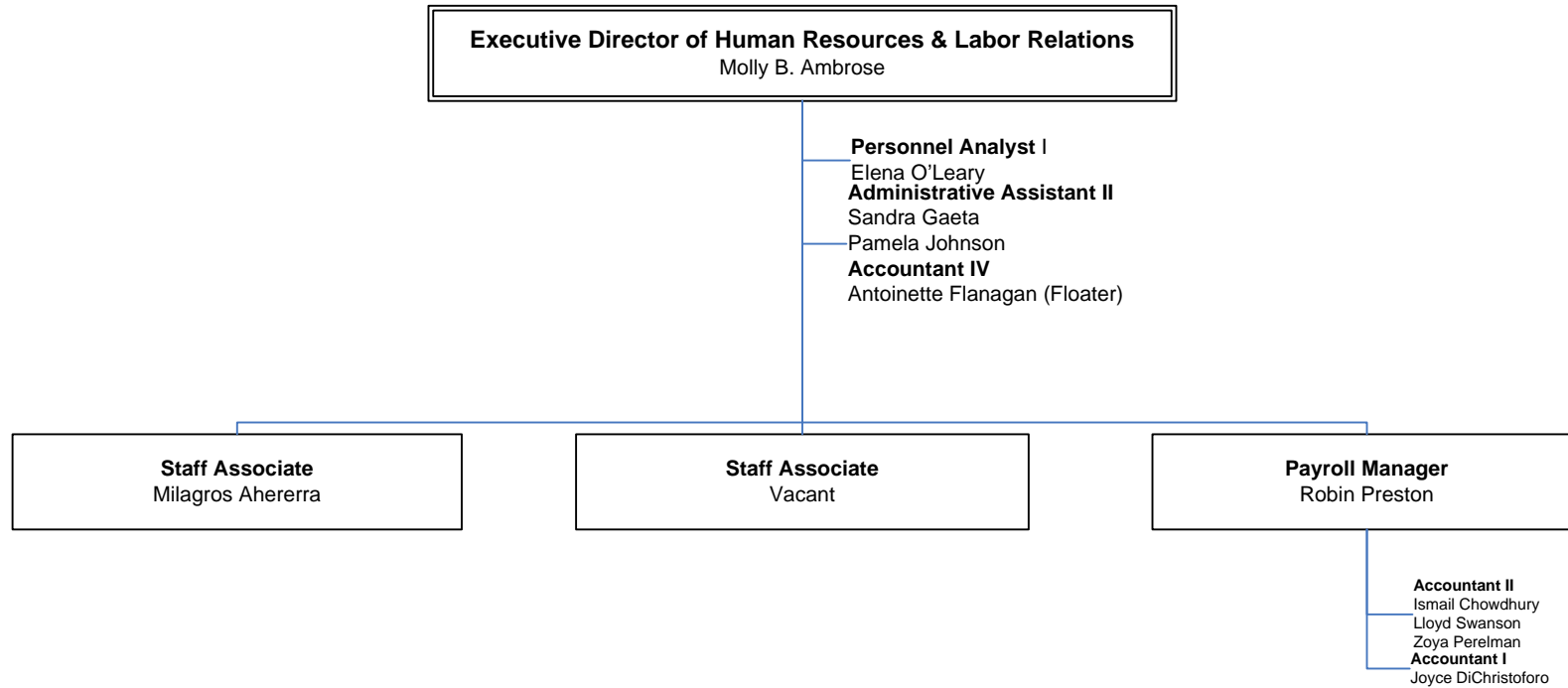
Business Office Organizational Chart #3A



BUNKER HILL COMMUNITY COLLEGE

DIVISION OF ADMINISTRATION

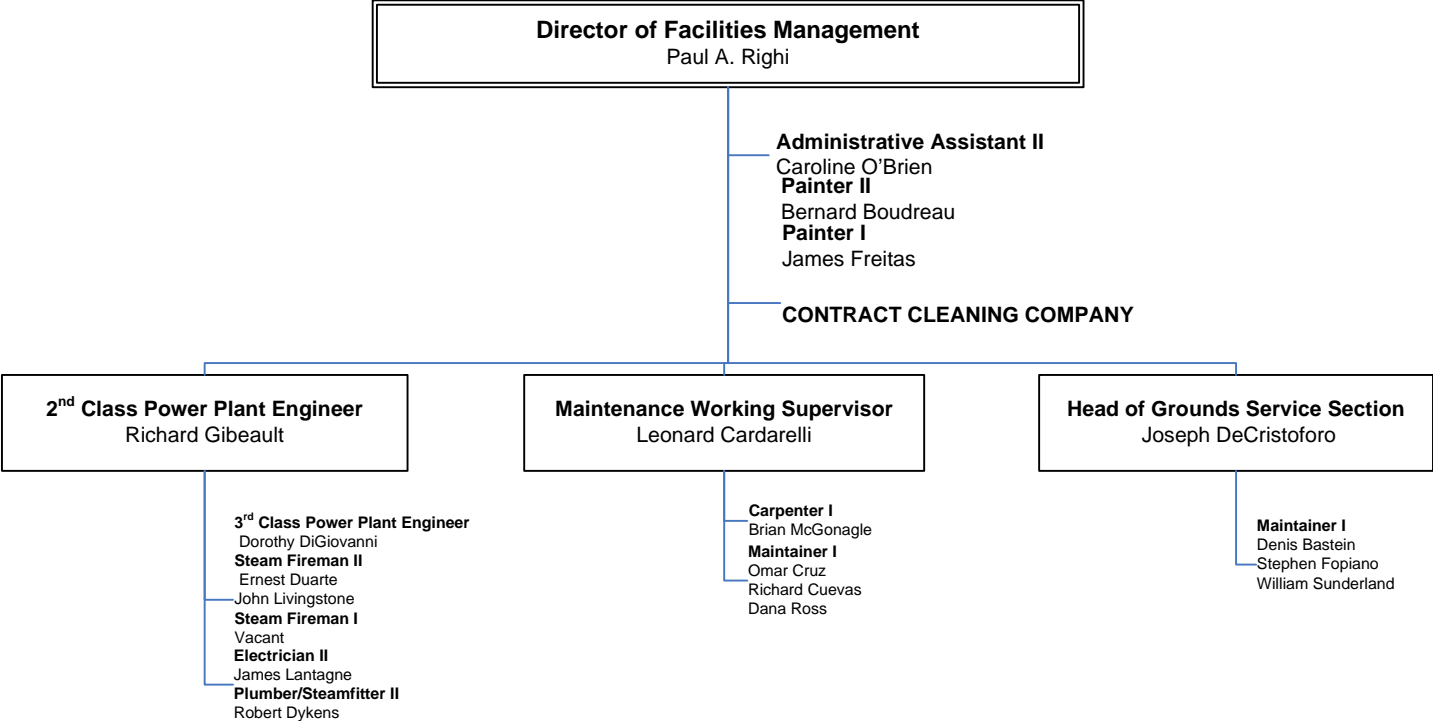
Human Resources Organizational Chart #3B



BUNKER HILL COMMUNITY COLLEGE

DIVISION OF ADMINISTRATION

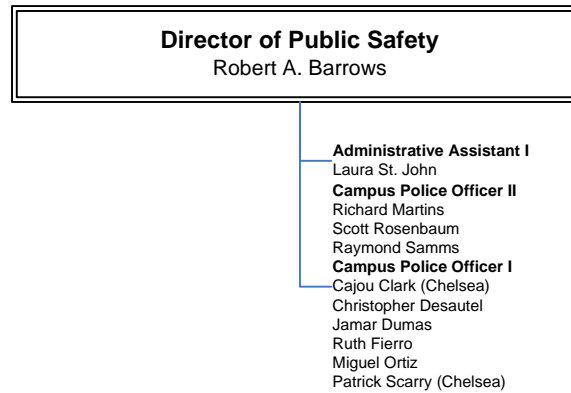
Facilities Management Organizational Chart #3C



BUNKER HILL COMMUNITY COLLEGE

DIVISION OF ADMINISTRATION

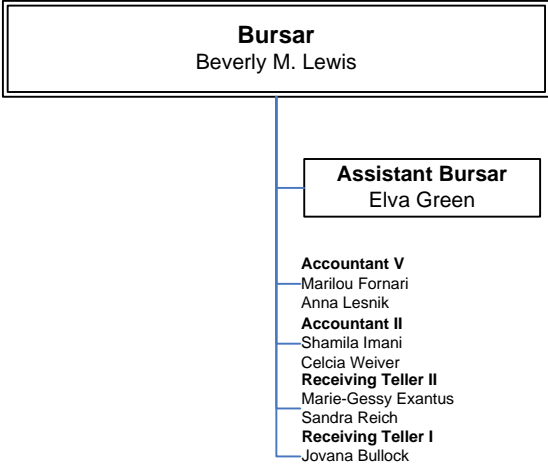
Public Safety Organizational Chart #3D



BUNKER HILL COMMUNITY COLLEGE

DIVISION OF ADMINISTRATION

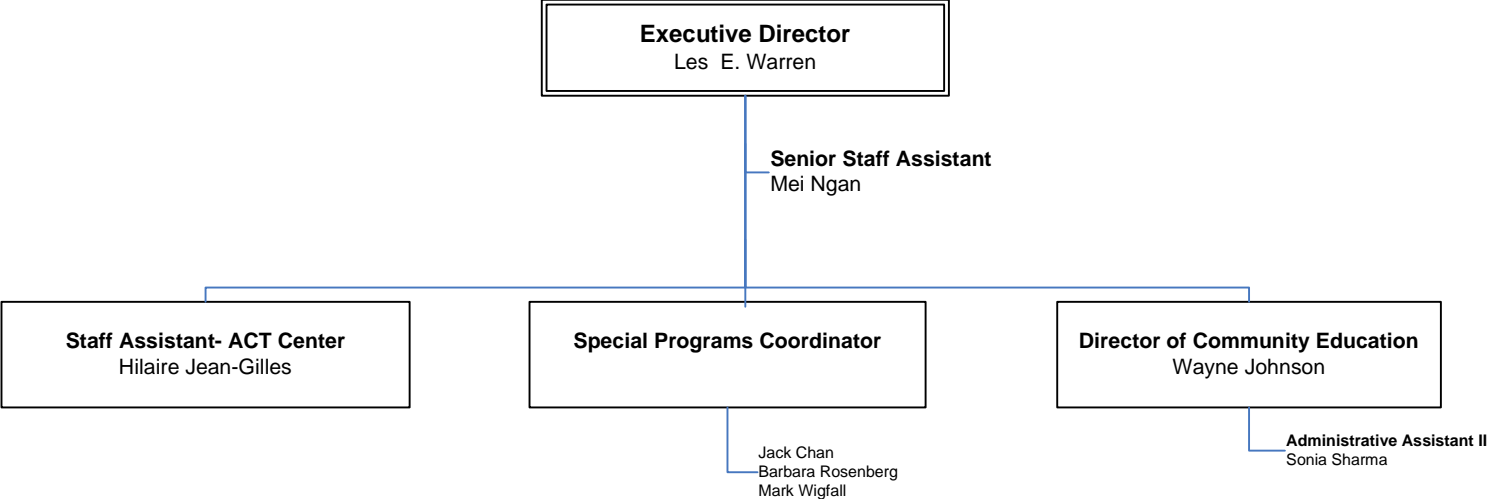
Student Payment Office
Organizational Chart #3E



BUNKER HILL COMMUNITY COLLEGE

DIVISION OF ADMINISTRATION

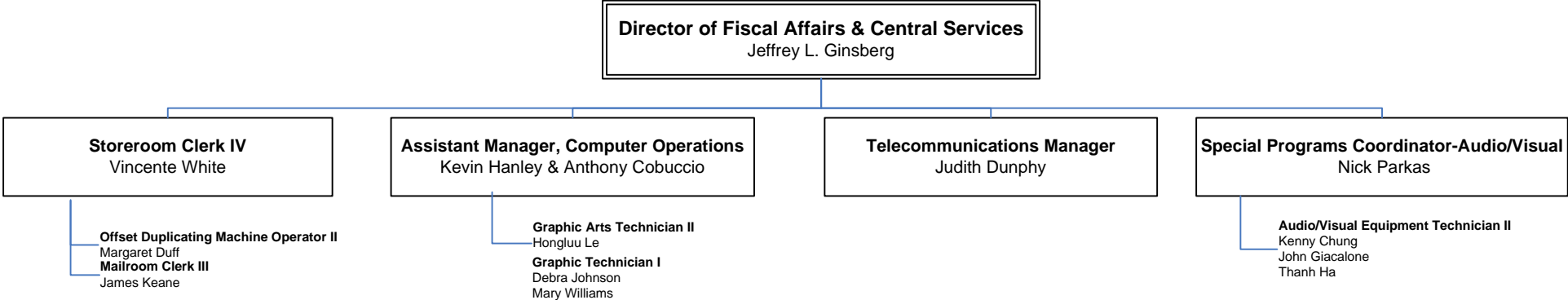
Workforce Development
Organizational Chart #3F



BUNKER HILL COMMUNITY COLLEGE

DIVISION OF ADMINISTRATION

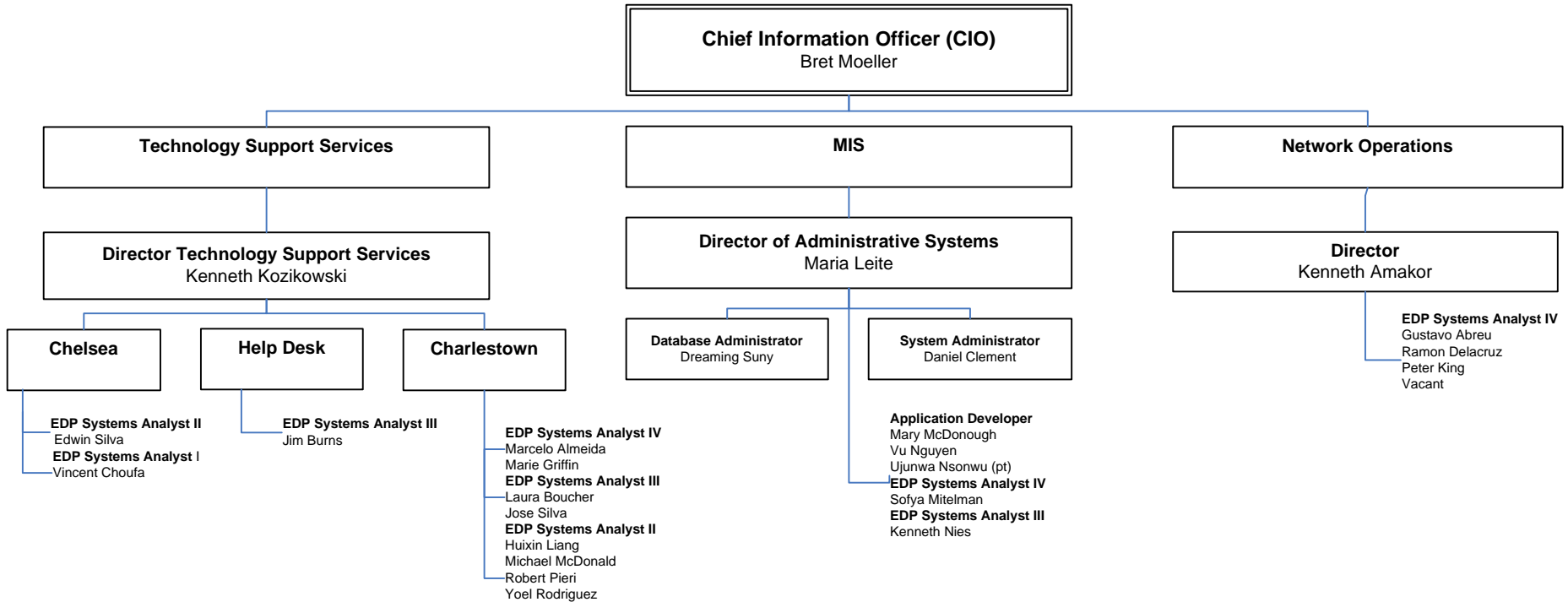
Fiscal Affairs & Central Services Organizational Chart #3G



BUNKER HILL COMMUNITY COLLEGE

DIVISION OF ADMINISTRATION

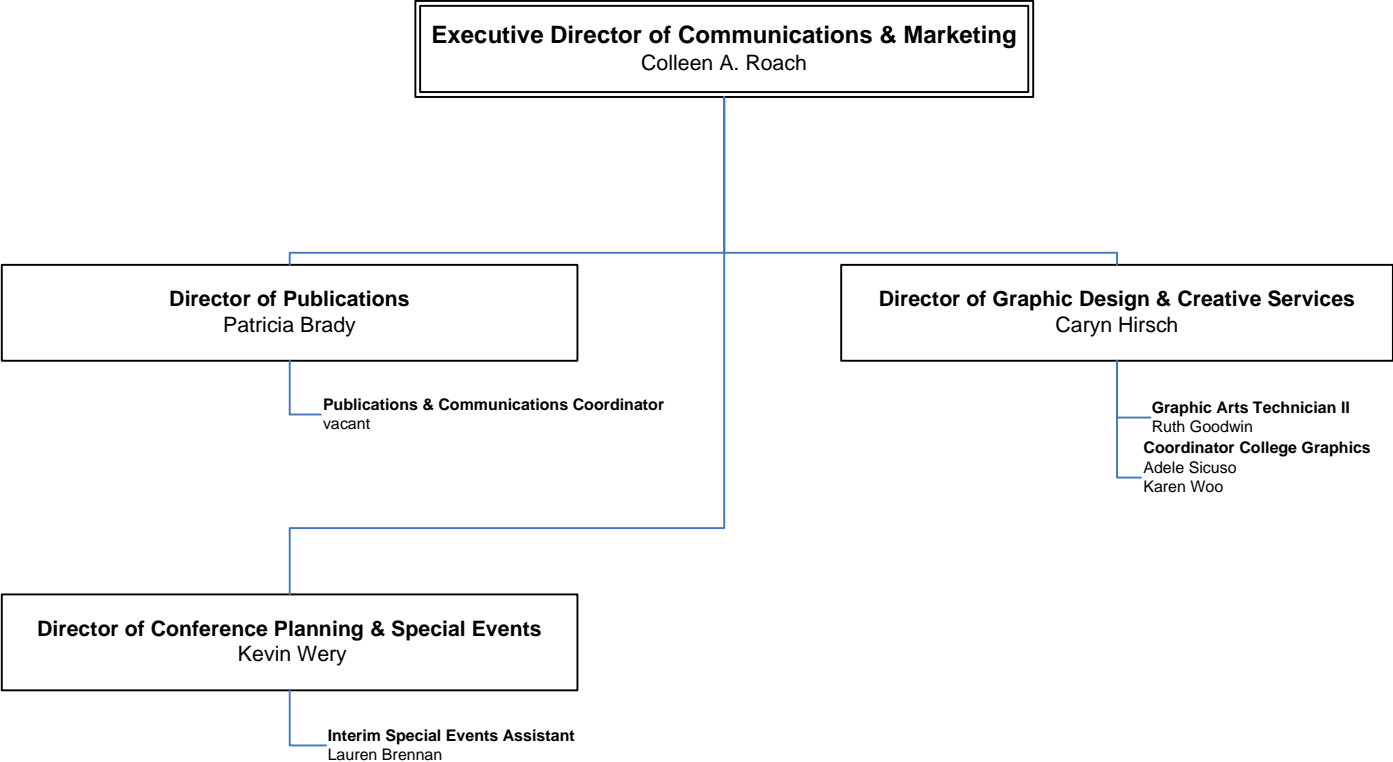
Information Services Organizational Chart #3H



BUNKER HILL COMMUNITY COLLEGE

DIVISION OF ADMINISTRATION

Communications & Marketing Organizational Chart #31

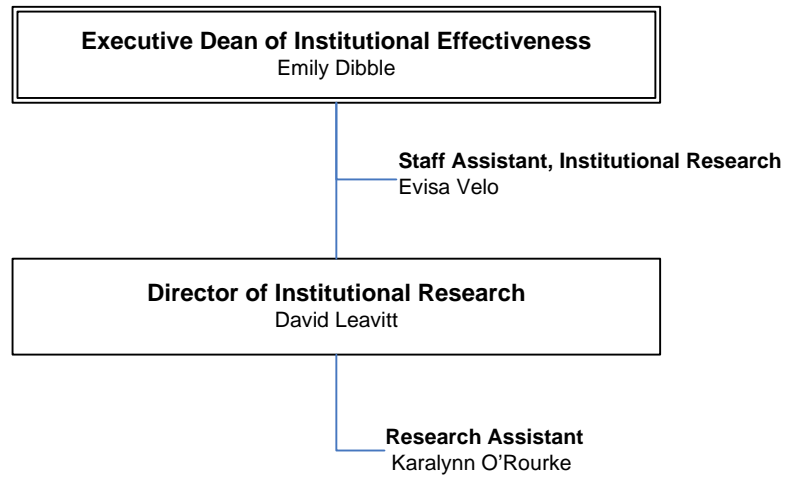


BUNKER HILL COMMUNITY COLLEGE

DIVISION OF ADMINISTRATION

Office of Institutional Effectiveness

Organizational Chart #3J



BUNKER HILL COMMUNITY COLLEGE

DIVERSITY & INCLUSION

Office of Diversity & Inclusion
Organizational Chart #4

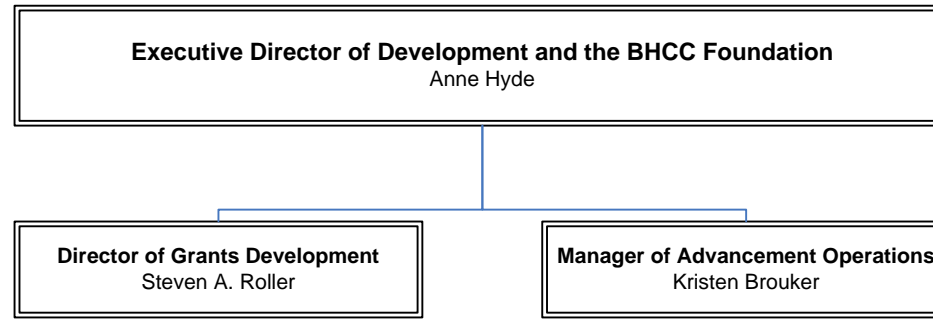
Director of Diversity & Inclusion
Thomas L. Saltonstall

BUNKER HILL COMMUNITY COLLEGE

INSTITUTIONAL ADVANCEMENT

Institutional Advancement

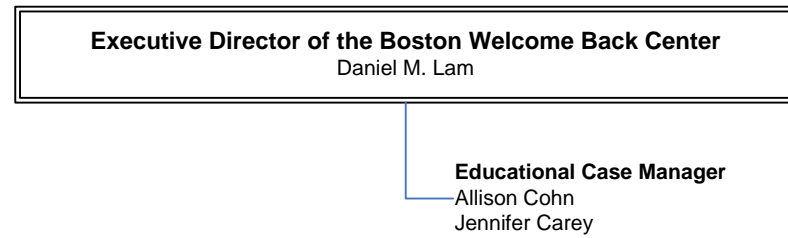
Organizational Chart #5



BUNKER HILL COMMUNITY COLLEGE

BOSTON WELCOME BACK CENTER

Boston Welcome Back Center
Organizational Chart #6



BHCC Board of Trustees

Jeanne-Marie Boylan, Chair
Richard J. DeAgazio, First Vice Chair
Denise Bruno Matthews*, Second Vice Chair
Francesco S. Tena, Student Trustee
James T. Chadwick
Michael Charbonnier
Hung T. Goon
Antoine Junior Melay*
Colleen Richards Powell
Gerardo Villacrés
Richard C. Walker, III

*BHCC ALUMNUS

Mary L. Fifield, Ph.D., President

